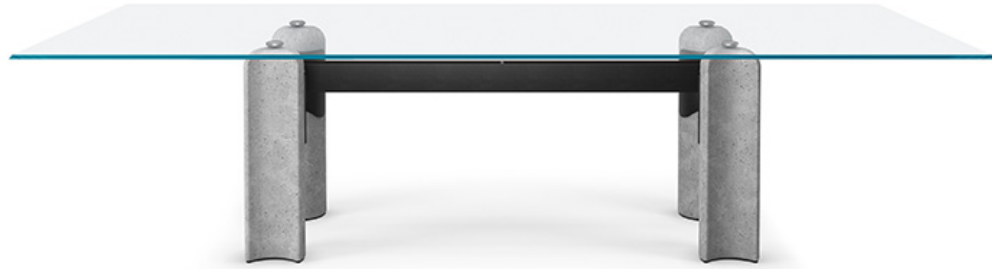


## BILBAO Glass

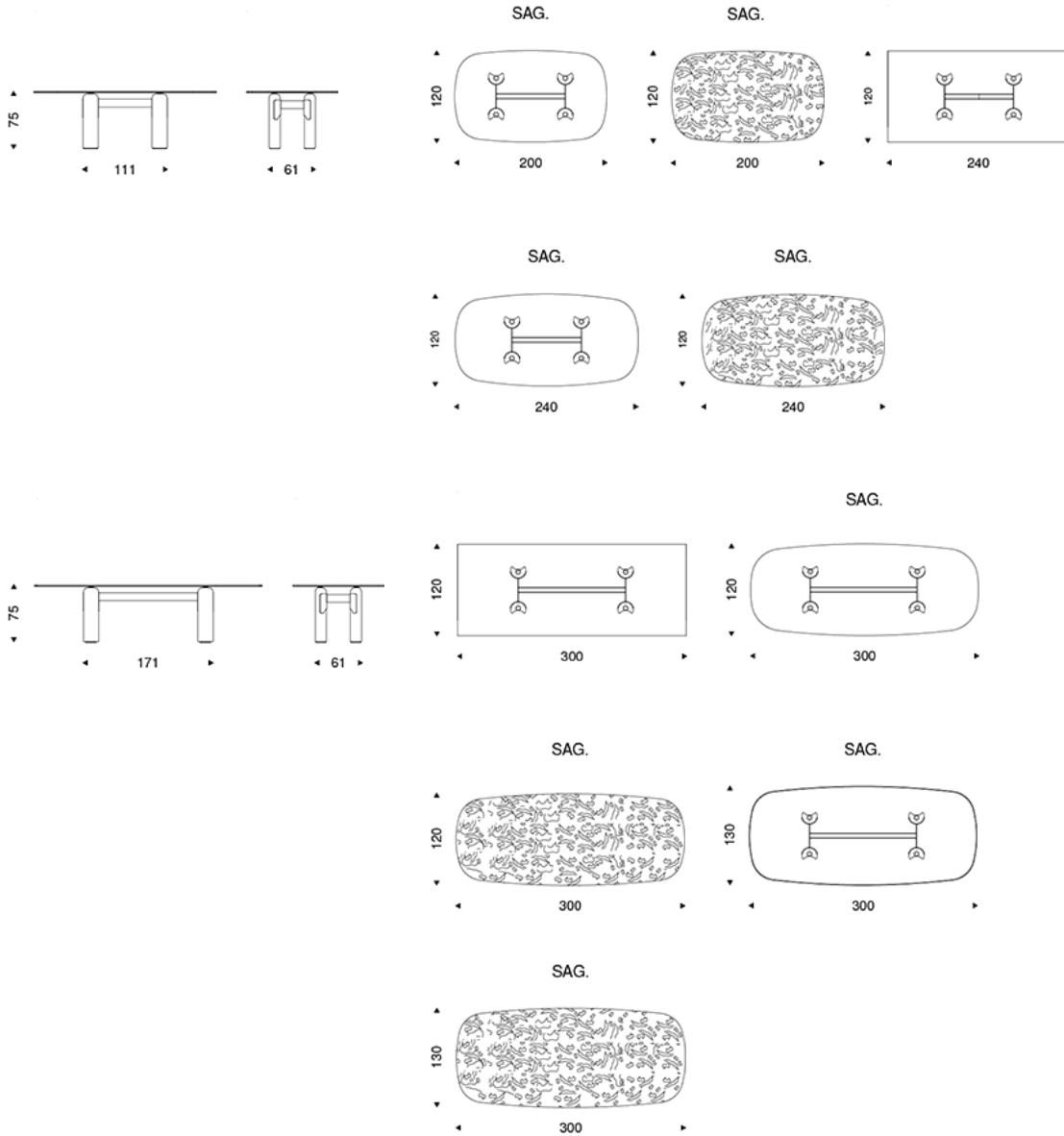


### Product description

Table with base in cement and frame in embossed titanium (GFM11), bronze (GFM18) or black (GFM73) lacquered steel, Oxybrass or Oxygrey lacquered steel. Top in 15mm clear, extra clear, extra clear bevelled glass, extra clear with reversed bevelled edges or extra clear textured (MIST) glass. The top is laid on the base.

# BILBAO Glass

## Dimensions



# BILBAO Glass

base

metal



GFM11 titanium embossed



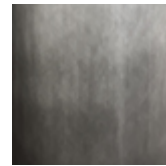
GFM18 bronze embossed



GFM73 black embossed



oxybrass



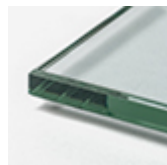
oxygrey

top

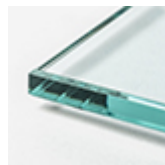
glass



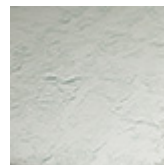
bevelled extra clear



clear



extra clear



extra clear textured (MIST)



reversed bevelled extra clear